



[Picture request](#)[Larger image](#)

Upper part of a limestone statue of Queen Ahmose-Merytamun

From Karnak, Egypt
Early 18th Dynasty, about 1500 BC

The lower part is still at Karnak

Giovanni Belzoni discovered this piece of a rare early Eighteenth-Dynasty sculpture while working in Karnak in 1817, in the area now known as the Eighth Pylon, a gateway on the southern axis of the temple. He found the statue in two pieces, removed the upper part and intended to return for the lower. He failed to do this, and the lower part is still visible there today.

Until the 1970s, when it was realized that these two fragments belonged together, the identity of this upper part was not known, though on stylistic grounds it was thought to represent a queen of the first half of the Eighteenth Dynasty (about 1550-1295 BC). The inscriptions on the base of the statue are damaged, but certainly give the name of Queen Ahmose-Merytamun, wife and sister of Amenhotep I (1525-1504 BC), and perhaps also her sister, Sitamun. The queen is shown wearing one of the earliest examples of the so-called 'Hathor wig'; a style of wig that resembles one worn by the goddess [Hathor](#).

Height: 111 cm (max.)

[EA 93](#)

[Room 4](#), Egyptian sculpture, west wall

R. Tefnin, 'Une statue de reine British Museum et Karnak et les paradoxes du portrait égyptien', *Journal of Egyptian Archaeology* (?), 69 (1983), pp. 96-107, pp. 96-107, plates VIII-X

 [Printer friendly page](#)

 [Say it](#)

Related Objects and Information



Pair of ivory clappers



Bronze medal of Giovanni-Battista Belzoni



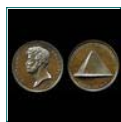
Amenhotep I, King of Egypt (1525-1504 BC)



Karnak (Egypt)



Ancient Egypt: The New Kingdom



Giovanni-Battista Belzoni (1778-1823)

Icon Key:

[Background Information](#)[Tour](#)[Multimedia](#)[BSL](#)

[Text Only](#) | [Home](#) | [Search](#) | [Tours](#) | [Folders](#) | [Help](#) [Back to top](#)

Collections Multimedia Public Access System

© 2000 The British Museum



Search



[Free Encyclopedia](#)

[Apply Now](#)

[Home](#) · [Index](#) · [Browse A-Z](#)

[Questions and Answers](#)

Sponsored Links

Encyclopedia

[A](#) [B](#) [C](#) [D](#) [E](#) [F](#) [G](#) [H](#) [I](#) [J](#) [K](#) [L](#) [M](#) [N](#) [O](#) [P](#) [Q](#) [R](#) [S](#) [T](#)
[U](#) [V](#) [W](#) [X](#) [Y](#) [Z](#) [Misc](#)

Contents

- [See also](#)
- [Notes](#)
- [Sources](#)
- [External links](#)

Browse A-Z

- [A](#)
- [B](#)
- [C](#)
- [D](#)
- [E](#)
- [F](#)
- [G](#)
- [H](#)
- [I](#)
- [J](#)
- [K](#)
- [L](#)
- [M](#)
- [N](#)
- [O](#)
- [P](#)
- [Q](#)
- [R](#)
- [S](#)
- [T](#)
- [U](#)
- [V](#)
- [W](#)
- [X](#)
- [Y](#)
- [Z](#)
- [Num](#)

Ahmose-Meritamun (or **Ahmose-Merytamun**), the daughter of [Ahmose I](#), became the [Great Royal Wife](#) of [Amenhotep I](#), [pharaoh](#) of [Egypt](#) in the [18th Dynasty](#). Her remains were discovered at [Deir el-Bahri](#), where she had been rewrapped and reburied by priests that had found her tomb violated by robbers. It appeared that she had died when she was in her early thirties, with evidence of being affected by [arthritis](#) and [scoliosis](#).

A limestone statue of the queen was discovered by [Giovanni Belzoni](#) while he was working in Karnak in 1817.^[1] "Upper part of a limestone statue of Queen Ahmose-Merytamun," The British Museum Web site.

See also

* [Eighteenth dynasty of Egypt Family Tree](#)

Notes

Sources

* Grajetzki, Wolfram (2005). *Ancient Egyptian Queens—a hieroglyphic dictionary*.

External links

*["Egypt: Who's Who of Ancient Egypt: Ahmose Meryt-Amon."](#)

Advertisement

Ads by Google

[Picture symbols](#)

Everything you need to know about the symbols used in ancient Egypt
www.skwirk.com.au

[Four Queens Hotel](#)

Fantastic Low Rates LasVegasDirect.com
 1-888-ME-VEGAS
www.LasVegasDirect.com

Rate this Article

Was this article helpful?

Not at all 1 2 3 4 5 Definitely

[License](#)
[Disclaimer](#)



